

Cifras de Stone Temple Pilots
por André Anjos

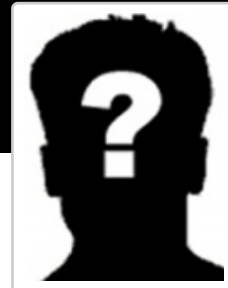
Compilado **21/05/2017**

<http://cifras.andreanjos.org/artist/stone-temple-pilots/cifras.pdf>

Conteúdo

Plush 3

Stone Temple Pilots



Plush

Tom: G

G D/f# F C Gm/d#
And I feel that time's a wasted go
F
So where you goin'
G D/f# F
to tomorrow And I see that these are the
C Gm/d# F
lies to come Or would you even care

(D Cadd9 G/B Cadd9)

And I feel it

And I feel it

Eb7+ F
Oh where ya goin' to tomorrow
Eb7+ F
Where ya goin' with the mask I found
Eb7+ F
And I feel and I feel when the dogs

begin to smell her

Eb7+ F
Will she smell alone
Intro (2 vezes)

G D/f# F
And I feel so much depends on the
C Gm/d# F
weather So is it raining in your
G D/f# F
Bedroom And I see that these are the eyes
C Gm/d# F
of disarray Or would you even care

(D Cadd9 G/B Cadd9)

And I feel it

And she feels it

Eb7+ F
Oh where ya goin' to tomorrow
Eb7+ F
Where ya goin' with the mask I found
Eb7+ F
And I feel and I feel when the dogs

begin to smell her

Eb7+ F
Will she smell alone

Chorus:

G F
Where the dogs can find her
C/e D Eb7+ D G
Got time, time to wait 'til tomorrow
F C/e D Eb7+ D G
To find her, to find her, to find her
G F
Where the dogs can find her
C/e D Eb7+ D G
Got time, time to wait 'til tomorrow
F C/e D Eb7+ D G
To find her, to find her, to find her

Intro (4 vezes)

Eb7+ F
Oh where ya goin' to tomorrow
Eb7+ F
Where ya goin' with the mask I found
Eb7+ F
And I feel and I feel when the dogs

begin to smell her

Eb7+ F
Will she smell alone

Chorus:

G F
Where the dogs can find her
C/e D Eb7+ D G
Got time, time to wait 'til tomorrow
F C/e D Eb7+ D G
To find her, to find her, to find her
G F
Where the dogs can find her
C/e D Eb7+ D G
Got time, time to wait 'til tomorrow
F C/e D Eb7+ D G
To find her, to find her, to find her

Intro (4 vezes)